

ASTERISM HYADES

The Hyades is a V-shaped group of stars that form the head of constellation Taurus, the Bull.

The stars Aldebaran, Gamma Tau, Delta Tau and Epsilon Tau form the asterism.

The Hyades were the seven daughters of Atlas and Aethra, half sisters of the Pleiades.

The Hyades play a quite major role in astrophysics.

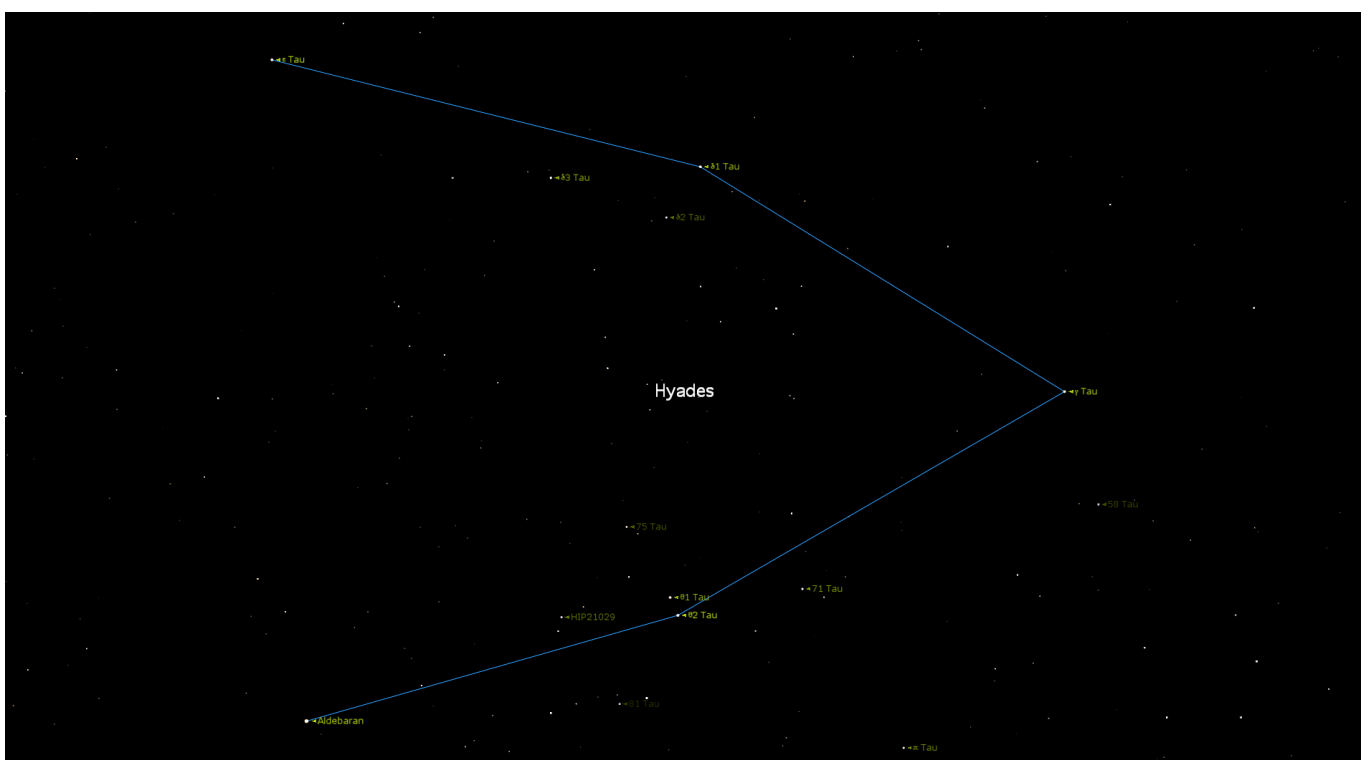
The Hyades are so close that the distance can be measured by geometrical methods, i.e. classical parallaxes of the individual stars or the so called "convergent-point" method which gives a distance to the cluster's center.

Getting this distance gives a fundamental step of the distance ladder to our galaxy and even further out to extragalactic objects.

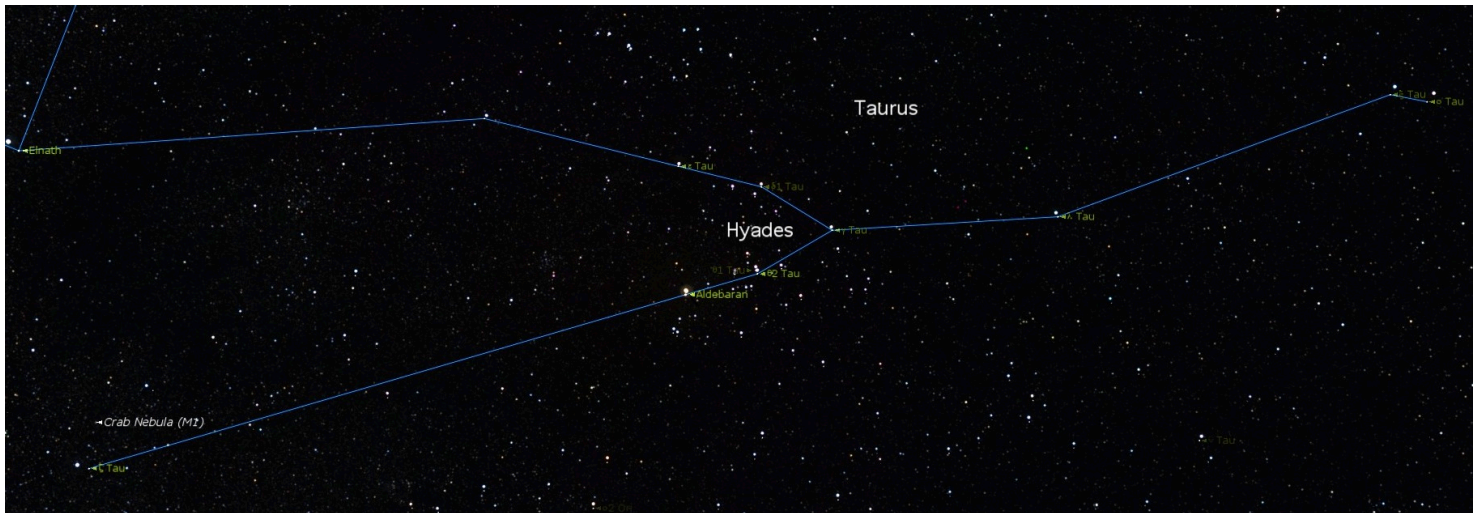
Asterism - An asterism is a distinctive pattern of stars or a distinctive group of stars in the sky.

Constellation - A grouping of stars that make an imaginary picture in the sky.
There are 88 constellations.

HYADES

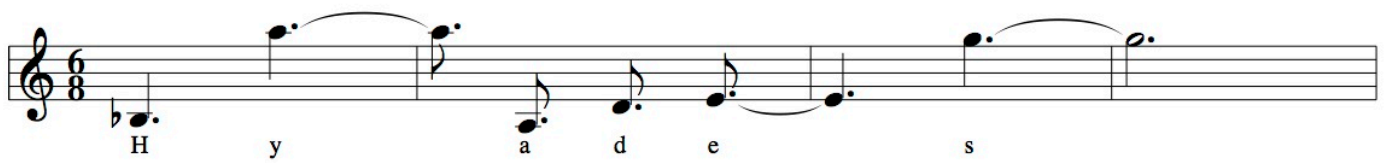


HYADES IN THE CONSTELLATION TAURUS

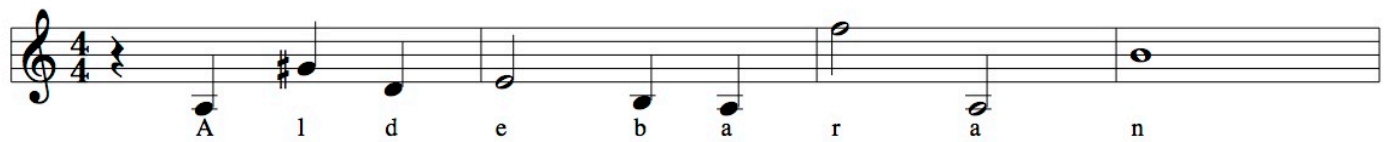


THE MAIN-THEMES FOR PIANO IN ASTERISM HYADES

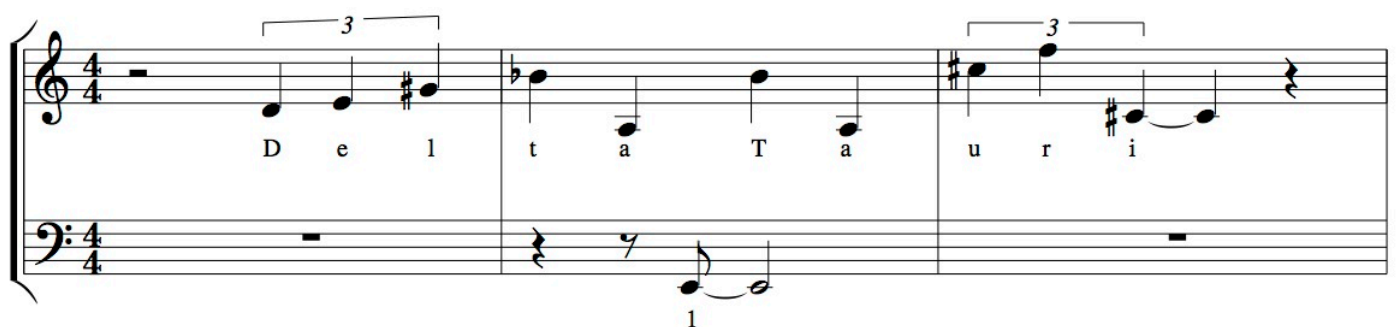
HYADES



ALDEBARAN



DELTA 1 TAURI



THE MOTIVES FOR PIANO IN ASTERISM HYADES

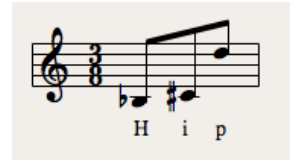
TAURI

A BAYER / FLAMSTEED INDICATION



HIP

THE HIPPARCOS AND TYCHO CATALOGUES (VOL. 1-17)



TYC

TYCHO MISSION

THE HIPPARCOS AND TYCHO CATALOGUES (VOL. 1-17)



THEMES USED IN HYADES

HYADES

THEMES USED IN ALDEBARAN

ALDEBARAN

HIP 21421

ALPHA TAURI

B7 TAURI

TYC

TYCHO MISSION

THEMES USED IN DELTA 1 TAURI

DELTA 1 TAURI

HIP 20455

TYC 1268-1267-1